



GOOD MORNING
Have Good Trading Day

MONDAY



Price is what you pay.
Value is what you get.

- Warren Buffet



MARKET PLUSE

INDIAN INDICES

NAME	CMP	NET CH.	%
SENSEX	28067	+517	+1.88
NIFTY	8518	+162	+1.95

INDIAN ADR'S

SYMBOL	CLOSE	GAIN/ LOSS %
DRREDDY	64.80	-1.67
HDFCBANK	62.95	+0.18
ICICIBK	9.76	+0.93
INFY	17.97	-0.33
TATAMOTOR	26.89	+0.26
WIPRO	12.54	+0.40

FII AND MF ACTIVITY

SYMBOL	In Crs.
FIIs Eq (Provisional)	403.76
FIIs Index Future	435.18
FIIs Index Options	666.64
FIIs Stock Future	-70.60
FIIs Stock Options	-60.67
DII's Eq (Provisional)	179.20

CURRENCY

RBI RATE	14-AUG-2015
RUPEE - \$	65.1225
EURO	72.1595
YEN 10	52.3500
GBP	101.6171

MARKET PLUSE

GLOBAL INDICES

NAME	CMP	NET CH.	%
DOW	17477	+69	+0.40
NASDAQ	5048	+14	+0.29
NIKKEI	20590	+70	+0.35
HANG SENG	237043	-248	-1.03
SGX NIFTY	8522	-24	-0.28

WORLD COMMODITIES

FUTURE	U\$\$	CHANGES
CRUDE	41.93	-0.57
NATURAL GAS	2.777	-0.024
GOLD	1115.8	+3.10
SILVER	15.240	+0.027
COPPER	2.3305	-0.0210

WORLD EVENTS

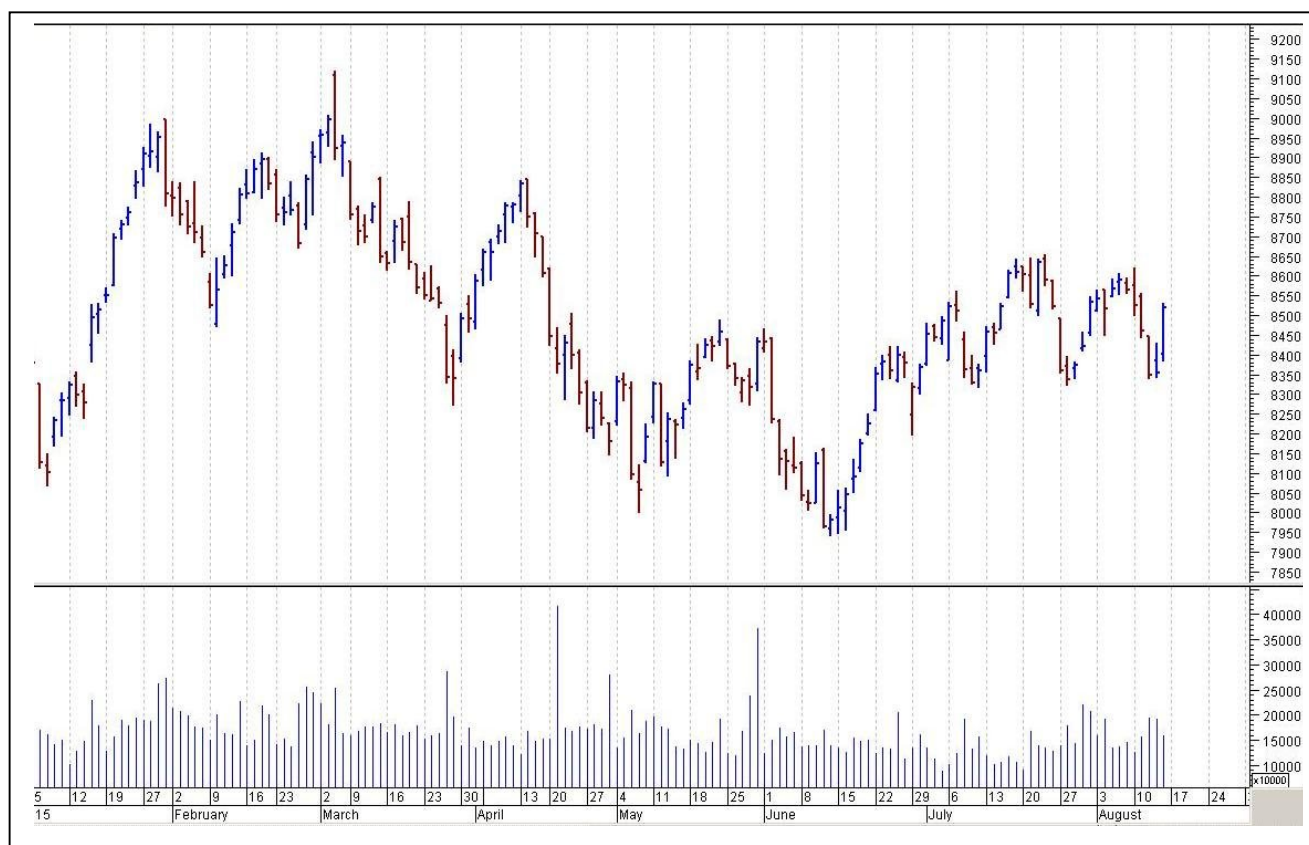
- US: Empire State Manufacturing Index
- UK:NIL

TOP STORY

- Government launches PSB revamp plan 'Indradhanush'. Announces 7 elements to reform PSU banks include appointments, bank boards, capital, de-stressing , empowerment, framework of accountability & governance reforms.
- July auto sales: Tata Motors -Group global wholesales at 73,535 units versus 76,602 units (MoM) - JLR global wholesales at 32,568 units versus 34,908 units (MoM)
- Cipla Q1 -Consolidated net profit at Rs 651 crore versus Rs 294.6 crore (YoY) -Consolidated total income up 41.6 percent at Rs 3,852.8 crore versus Rs 2,720 crore (YoY)
- Lupin gets US FDA nod for birth control drug Bekyree
- Adani Ports , Kerala to sign Vizhinjam project MoU today
- HUL forays into tea restaurant business, opens tea house in Mumbai
- Birla Corp to acquire Jogobera & Sonadih Cement business from Lafarge for Rs 5,000 crore



NIFTY CHART



MARKET COMMENTARY

Markets coming out of their choppiness of last session, showed a one way surge on Friday to snap the week on an extremely high note led by broad based rally. Traders were encouraged by Finance minister Arun Jaitley's statement that the Cabinet committee on political affairs chose not to prorogue Parliament, keeping the door open for both Houses to meet at short notice before the winter session begins in November. His statement raised the hopes that GST could well see the light of the day, as the government is determined to stick to its implementation timeline of April 2016. Domestic equity markets after a positive start maintained their upward stance till last and Sensex advanced further to reclaim the 28,000-mark and Nifty conquered the 8500 level following the recent slump. For today's trade Nifty likely to trade in the range between 8540 - 8560 in the upper side and 8490 – 8470 in the lower side.

MARKET LEVELS

	CMP	SUPPORT LEVELS				RESISTANCE LEVELS			
NIFTY	8518	8490	8470	8450	8420	8540	8560	8580	8620
USDINR	65.1425	65.05	64.95	64.84	64.7	65.25	65.3	65.4	65.5



FUTURES CORNER

SCRIPS	CLOSE	SUPPORT	TARGET		REMARKS
		STOP LOSS	T1	T2	
ASIANPAINTS	899.45	891	914	925	TRADING CALL
BAJAJ-AUTO	2560.55	2545	2585	2605	TRADING CALL
TATAMOTORS	356	351	362	365	TRADING CALL

EQUITY CORNER

SCRIPS	CLOSE	SUPPORT	TARGET		REMARKS
		STOP LOSS	T1	T2	
JETAIRWAYS	400.65	390	415	425	TRADING CALL
SREINFRA	41.4	40	43	45	TRADING CALL

DELIVERY BASED CALL / INVESTMENT CALL

SCRIPS	CMP	SUPPORT	TARGET		REMARK
		STOP LOSS	T1	T2	

BULK DEALS (BSE)

SCRIP	CLIENT NAME	BUY/SELL	QUANTITY	PRICE
NIL				

BULK DEALS (NSE)

SCRIP	CLIENT NAME	BUY/SELL	QUANTITY	PRICE
NITINFIRE	AMITABH HARIVANSHRAI BACHCHAN	BUY	1500000	42.99
RUSHIL	JINALI KALPESH SHAH	SELL	72000	144

SCRIP'S IN F&O BAN

(To resume for normal trading below 80% of market wide limit required)

AMTEKAUTO, IBREALEST



NIFTY 50 STOCKS: SUPPORT & RESISTANCE						
Symbol	Close	Support 1	Support 2	Pivot Point	Resistance1	Resistance2
ACC	1372.05	1353.47	1342.38	1366.13	1377.22	1389.88
AMBUJACEM	226.30	209.47	196.83	217.63	230.27	238.43
ASIANPAINT	895.25	862.15	849.95	874.55	886.75	899.15
AXISBANK	570.00	561.22	554.88	566.33	572.67	577.78
BAJAJ-AUTO	2558.60	2435.90	2384.95	2472.95	2523.90	2560.95
BANKBARODA	184.40	173.83	170.92	178.42	181.33	185.92
BHARTIARTL	395.10	369.72	354.63	392.23	407.32	429.83
BHEL	261.50	252.53	246.47	258.47	264.53	270.47
BOSCHLTD	25387.35	24501.57	24064.03	25187.43	25624.97	26310.83
BPCL	873.75	864.12	842.98	878.93	900.07	914.88
CAIRN	155.70	152.13	150.07	155.07	157.13	160.07
CIPLA	739.60	714.00	702.50	722.00	733.50	741.50
COALINDIA	377.55	368.40	359.75	373.65	382.30	387.55
DRREDDY	4257.75	4253.25	4214.75	4285.60	4324.10	4356.45
GAIL	337.15	328.12	324.18	333.78	337.72	343.38
GRASIM	3703.75	3557.90	3510.55	3621.35	3668.70	3732.15
HCLTECH	973.70	951.47	937.38	970.18	984.27	1002.98
HDFC	1299.95	1247.03	1237.12	1260.02	1269.93	1282.92
HDFCBANK	1101.80	1068.53	1059.52	1075.62	1084.63	1091.72
HEROMOTOCO	2712.45	2615.80	2585.10	2649.90	2680.60	2714.70
HINDALCO	93.15	88.13	85.47	93.07	95.73	100.67
HINDUNILVR	870.55	851.37	836.18	865.18	880.37	894.18
ICICIBANK	302.60	288.93	285.97	293.82	296.78	301.67
IDEA	161.25	153.32	149.43	159.53	163.42	169.63
INDUSINDBK	959.00	912.27	899.23	923.03	936.07	946.83
INFY	1149.25	1086.75	1015.50	1126.80	1198.05	1238.10
ITC	318.15	306.33	296.32	313.02	323.03	329.72
KOTAKBANK	717.70	684.23	677.72	689.62	696.13	701.52
LT	1799.50	1740.78	1721.42	1767.37	1786.73	1813.32
LUPIN	1793.45	1725.07	1692.03	1749.43	1782.47	1806.83
M&M	1378.15	1311.07	1282.53	1329.53	1358.07	1376.53
MARUTI	4572.50	4441.10	4389.35	4481.90	4533.65	4574.45
NMDC	97.25	95.27	93.48	97.58	99.37	101.68
NTPC	129.65	126.57	125.28	127.88	129.17	130.48
ONGC	270.40	265.60	261.45	269.80	273.95	278.15
PNB	166.25	150.37	147.88	153.93	156.42	159.98
POWERGRID	138.35	129.67	121.53	134.13	142.27	146.73
RELIANCE	966.95	923.85	914.35	938.90	948.40	963.45
SBIN	268.50	257.35	255.40	260.10	262.05	264.80
SUNPHARMA	897.70	850.03	821.02	869.02	898.03	917.02
TATAMOTORS	355.25	344.62	339.83	352.78	357.57	365.73
TATAPOWER	69.70	67.35	65.55	69.05	70.85	72.55
TATASTEEL	237.60	225.97	218.33	239.93	247.57	261.53
TCS	2703.20	2566.40	2497.20	2625.20	2694.40	2753.20
TECHM	555.05	540.70	530.10	554.10	564.70	578.10
ULTRACEMCO	3103.90	3031.20	2992.55	3069.10	3107.75	3145.65
VEDL	107.10	96.23	89.07	106.42	113.58	123.77
WIPRO	575.25	564.83	558.47	572.17	578.53	585.87
YESBANK	796.80	751.23	740.32	768.12	779.03	795.92
ZEEL	419.80	396.20	391.60	403.60	408.20	415.60



CORPORATE ACTION / BOARD MEETINGS

NSE Download Ref.No.:NSE/CML/3028:- Suspension of trading in securities of Company Clutch Auto Limited for non-compliance of certain clauses of Listing Agreementw.e.f 11-Aug-2015

NSE Download Ref No :NSE/FAOP/30304:- Exclusion of Futures and Options contracts on JPPOWER wefSeptember 25, 2015

NSE Download Ref No :NSE/FAOP/30449:- Revision of Market Lot of Derivative Contracts on Indices. Only the far month contract i.e. November 2015 expiry contracts will be revised for market lots wef August 28, 2015. The new market lot will be as follows: NIFTY - 75, BANKNIFTY- 30, CNXIT- 45, CNXINFRA- 150, CNXPSE - 150, NFTYMCAP50- 150

NSE Download Ref No : NSE/FAOP/30448:- Revision in Market Lot of Derivative Contracts on Individual Stocks. Only the far month contract i.e. November 2015 expiry contracts will be revised for market lotswef August 28, 2015. See Annexure in NSE circular for new market lot of individual stocks.

BOARD MEETINGS

COMPANY NAME	DATE	PURPOSE	RS. PER SH.
SIGNET	17-Aug-15	Face Value Split From Rs 10 To Rs 1	
PLASTIBLEN	17-Aug-15	Annual General Meeting / Dividend	5.5
KABRAEXTRU	17-Aug-15	Annual General Meeting / Dividend	2
DLF	17-Aug-15	Dividend	2
MORARJEE	17-Aug-15	Annual General Meeting / Dividend	1.75
FRL	17-Aug-15	Annual General Meeting / Dividend	0.6
FRLDVR	17-Aug-15	Annual General Meeting / Dividend	0.64
THOMASCOOK	17-Aug-15	Annual General Meeting / Dividend	0.5
FLFL	17-Aug-15	Annual General Meeting / Dividend	0.4
EVERESTIND	17-Aug-15	Annual General Meeting / Dividend	5
INDNIPPON	19-Aug-15	Annual General Meeting / Dividend	4.5
RCF	19-Aug-15	Annual General Meeting / Dividend	1.8
CENTURYPLY	19-Aug-15	Annual General Meeting / Dividend	1.25
PRECWIRE	19-Aug-15	Annual General Meeting / Dividend	2.5
KIRLOSIND	19-Aug-15	Annual General Meeting / Dividend	20
MAYURUNIQ	19-Aug-15	Dividend	
HMVL	19-Aug-15	Dividend	1.2
KKCL	20-Aug-15	Dividend	1.5
JUBILANT	20-Aug-15	Annual General Meeting / Dividend	3
BOSCHLTD	20-Aug-15	Annual General Meeting / Dividend	85
NBVENTURES	20-Aug-15	Annual General Meeting / Dividend	5
SINTEX	20-Aug-15	Dividend	0.7

NEWS & RUMOURS:

- Gold (Spot Dollar) major support = \$1080/\$1049 & Resistance = \$1141/\$1170.
- Crude oil range->\$37 to \$47.
- Wall Street higher after positive economic data: - Wall Street was slightly higher on Friday as a raft of positive data pointed to a bullish signal for third-quarter economic growth. The Dow and the S&P 500 were on track to post slight gains for the week, but the NASDAQ was poised to close flat in a choppy week that saw China devalue its currency, hitting markets and derailing predictions of a rate hike.
- During a press conference in Beijing, PBOC deputy governor Yi Gang said the central bank is hoping to accelerate foreign exchange market development by improving its yuan pricing mechanism both offshore and on the China mainland. In addition, Gang emphasized that the PBOC has ample foreign exchange reserves to provide strong support for significant depreciations in the currency. Gang also went to great lengths to dismiss reports that the PBOC could depreciate the yuan by as much as 10% on a long-term basis.
- Oil futures drop to fresh 6-year lows: - [Crude oil futures](#) dropped to fresh six-year lows on Friday, as growing expectations for a September rate hike by the Federal Reserve boosted the dollar, while sustained concerns over a global supply glut continued to weigh on the commodity.
- Gold prices dip in Asia with markets watch for China devaluation effects: - Gold prices dipped mildly in Asia on Friday as investors looked for shifts in the outlook for Asian economies after China's surprise devaluations this week.
- Consumer Sentiment in U.S. Decreased in August for Second Month: - Confidence among U.S. consumers eased for a second month in August as households braced for an increase in interest rates that could slow growth.

TRENDS & OUTLOOK – DATE: 17- Aug- 2015

PRECIOUS METALS:

COMMDITY (MCX)	S2	S1	PIVOT POINT	R1	R2
GOLD (Oct)	25200	25464	25800	25999	26296
SILVER (Sep)	33300	34500	35700	36900	37786

BASE METALS

COMMDITY (MCX)	S2	S1	PIVOT POINT	R1	R2
COPPER (Aug)	327	332	338	343	348
ZINC (Aug)	114.75	117.30	119.50	122.20	124.70
LEAD (Aug)	108.30	111.40	113.55	116.40	118.60
NICKEL (Aug)	655	672	690	712	736

ENERGY

COMMDITY (MCX)	S2	S1	PIVOT POINT	R1	R2
CRUDE OIL (Aug)	2570	2655	2761	2875	2955
NATURAL GAS (Aug)	171	177	183	188	194

DATE TALKS : TODAY'S ECONOMIC DATA :

Prelim GDP of JPY, Empire State Manufacturing Index, NAHB Housing Market Index.



Registered Office

Indira House, 3rd Floor, 5 Topiwala Lane,
Opp. Lemington Road Police Station, Grant Road (East), Mumbai - 400007.

Corporate Office

'Ramavat House' E-15, Saket Nagar, Indore - 452018 (M.P.)

Customer Care

Tel: +91-731-4097170/ 71/ 72/ 73/ 74 M. +91 93031 72345

Email: customercare@indiratrade.com www.indiratrade.com



INSTITUTIONAL DEALING UNIT

Africa House, 5, Topiwalla Lane, Lamington Road, Mumbai, 400007

Tel: +91 22 30080678 Fax : +91 22 23870767 Email : ie@indiratrade.com

Disclaimer

This report is for private circulation within the Indira Group. This report is strictly confidential and for information of the selected recipient only and may not be altered in any way, transmitted to, copied or distributed, in part or in whole, to any other person or to the media or reproduced in any form. This report should not be construed as an offer or solicitation to buy or sell any securities or any interest in securities. It does not constitute a personal recommendation or take into account the particular investment objectives, financial situations, or any such factor. The information, opinions estimates and forecasts contained here have been obtained from, or are based upon, sources we believe to be reliable, but no representation of warranty, express or implied, is made by us to their accuracy or completeness. Opinions expressed are our current opinions as of the date appearing on this material only and are subject to change without notice.